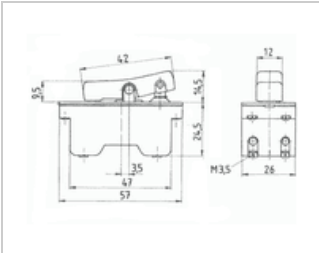




Rocker switch, Off-switch, 2-pole - Marquardt 1251.0303

Manufacturer: Marquardt
Type: 1251.0303
Product no.: 387
Weight: 0.070



■ Details

2-pole power tool switch, off-switch. Usable up to 16A motor load. Suitable for devices the of the protection class II.

E.g. Suitable for some angle grinder from Flex

■ Specifications

Switching function	On-off latching
Labelling	0-I in red
Connection	Pillar terminal M4
Switching capacity	16(16)A 250V AC 5E4