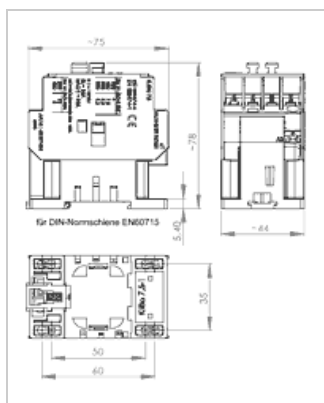




Contactor Klinger&Born KLIBO7,5, 400V, 3 N/O contacts, 1 N/C contacts

Manufacturer:	Klinger & Born
Type:	4036.7523
Product no.:	4036.7523
Weight:	0.200



■ Details

Contactor KLIBO7.5 for motors up to 7.5 kW, control voltage 400V, 3 N/O contacts, 1 N/C contacts

■ Properties

- Motor contactor 7.5kW
- Corresponds to IEC947-4-1, EN60947, DIN VDE0660 part 102
- To switch motors up to 4.0kW 230V~/AC-3 bzw. 7.5kW 400V~/AC-3
- Electrically on/off
- Screw connection or rail mounting

■ Suitable as replacement for Kedu JD10-4

The Contactor is a replacement for the Kedu JD10-4 with 3 N/O contacts and a N/C contacts suitable.

■ Specifications

Control voltage U_c	380-400 V, 50 Hz
Thermal continuous current I_{th}	30 A
Voltage U_i	400 V
Short-circuit protection	32 A<
Switching contacts	3 N/O contacts, 1 N/C contacts
Switching capacity	4.0 kW 230V~ AC-3 7.5 kW 400V~ AC-3
Norms	IEC947-4-1, VDE0660-102

