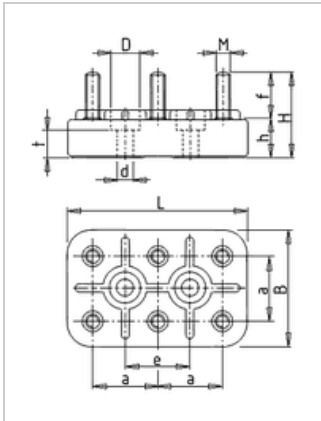




## Motor terminal board KL 10 K, 6-pole, M3

Manufacturer: Geiss  
Type: 30S  
Product no.: KL10K  
Weight: 0.030



### ■ Details

motor terminal board with non-adjustable spacings the mounting holes

**scope of supply** pre-assembled with nuts, washers, optionally with or without bridges (3 items)

### ■ Dimensions in mm (refer to dimension sheet)

L	B	M	H	H	F	A	E	DØ	DØ	T
36	23	M3	15,7	5,7	10	13	13	6,5	3,5	3,2

### ■ Specifications

<b>bolt-Ø</b>	M3
<b>basic body</b>	23 x 36 m
<b>Hole spacing</b>	13 mm
<b>permitted continuous current</b>	10 A
<b>temperature-resistant up to</b>	<a href="#">Iso-Class F (155°C)</a>
<b>bolt material</b>	CuZn37 F35 (Messing)
<b>Nuts-tightening torque</b>	0,8 Nm
<b>terminal designation</b>	W2-U2-V2 U1-V1-W1