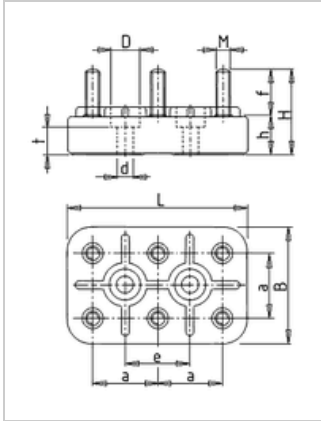




Motor terminal board KL 1 K, 6-pole, M4

Manufacturer: Geiss
Type: 1S
Product no.: KL1K
Weight: 0.060



■ Details

motor terminal board M4 with non-adjustable fixingsborespacing 18 mm.

■ Scope of supply

Scope of supply: Pre-assembled with nuts and washers, optionally with or without 3 connection bridges.

■ Dimensions in mm (refer to dimension sheet)

L	B	M	H	H	F	A	E	DØ	DØ	T
50	32	M4	22,5	11	12	18	18	8,5	4,5	5,5

■ Specifications

bolt-Ø	M4
basic body	32 x 50 mm
Hole spacing	18 mm
permitted continuous current	25 A
temperature-resistant up to	Iso-Class F (155°C)
bolt material	CuZn37 F35 (Messing)
Nuts-tightening torque	2 Nm
terminal designation	W2-U2-V2 U1-V1-W1