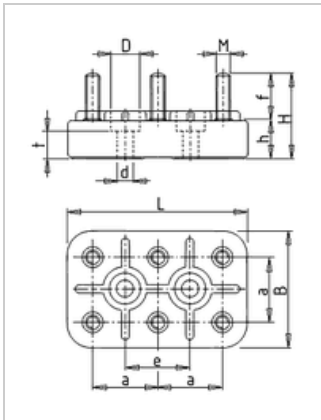




Motor terminal board KL 31, 6-pole, M4

Manufacturer: Geiss
Type:
Product no.: KL31
Weight: 0.050



■ Details

motor terminal board with non-adjustable spacings the mounting holes

scope of supply with nuts, washers, optionally with or without bridges (3 items)

■ Dimensions in mm (refer to dimension sheet)

L	B	M	H	H	F	A	E	DØ	DØ	T
44	28	M4	22	10	12	15	15	8,5	4,5	7

■ Specifications

bolt-Ø	M4
basic body	28 x 44 mm
Hole spacing	15 mm
permitted continuous current	16 A
Nuts-tightening torque	1,2 Nm
terminal designation	W2-U2-V2 U1-V1-W1