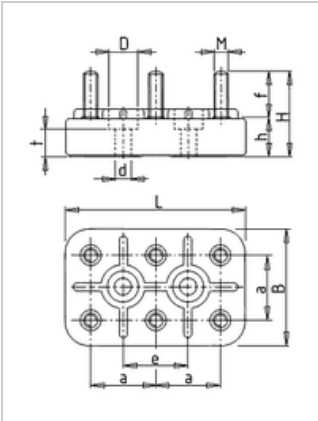




## Motor terminal board KL 3 K, 6-pole, M6

Manufacturer: Geiss  
Type: 3S  
Product no.: KL3K  
Weight: 0.120



### ■ Details

6-pole motor terminal board with with M6-bolts. for spacings of the mounting holes from 25 mm.

### ■ Scope of supply

scope of supply with nuts and washers, optionally without or with 3 connection bridges.

### ■ Dimensions in mm (refer to dimension sheet)

L	B	M	H	H	F	A	E	DØ	DØ	T
71	47	<b>M6</b>	31	14	17	25	<b>25</b>	11	7	8,5

### ■ Specifications

<b>bolt-Ø</b>	M6
<b>basic body</b>	47 x 71 mm
<b>Hole spacing</b>	25 mm
<b>permitted continuous current</b>	63 A
<b>Nuts-tightening torque</b>	3 Nm
<b>terminal designation</b>	W2-U2-V2 U1-V1-W1