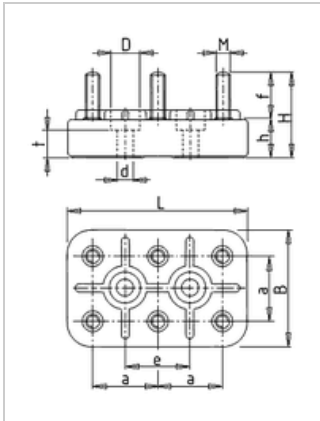




Motor terminal board KL 6 K, 6-pole, M8

Manufacturer: Geiss
Type: 6S
Product no.: KL6K
Weight: 0.180



■ Details

6-pole terminal board M8 with non-adjustable hole spacing for the fixing. for spacings the threaded holes from 35 mm.

■ Scope of supply

scope of supply with nuts and washers, optionally without or with 3 connection bridges.

■ Dimensions in mm (refer to dimension sheet)

L	B	M	H	H	F	A	E	DØ	DØ	T
95	60	M8	39	17	22	35	35	12	7	13

■ Specifications

bolt-Ø	M8
basic body	60 x 95 mm
Hole spacing	35 mm
permitted continuous current	100 A
Nuts-tightening torque	6 Nm
terminal designation	W2-U2-V2 U1-V1-W1