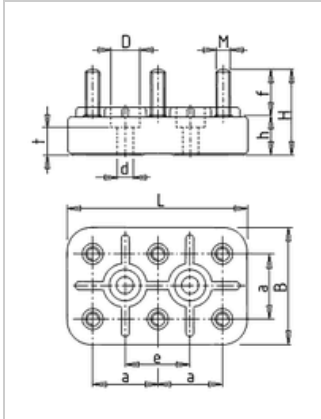




Motor terminal board KL 7 K/2, 6-pole, M12

Manufacturer:	Geiss
Type:	712S
Product no.:	KL7K2
Weight:	0.820



■ Details

Motorterminal board with M12-bolts. spacing the mounting holes 44 mm.

■ Scope of supply

scope of supply with nuts and washers, optionally without or with 3 connection bridges.

■ Dimensions in mm (refer to dimension sheet)

L	B	M	H	H	F	A	E	DØ	DØ	T
114	70	M12	60.5	20.5	40	44	44	12	7.5	13

■ Specifications

bolt-Ø	M12
basic body	70 x 114 mm
Hole spacing	44 mm
permitted continuous current	250 A
temperature-resistant up to	Iso-Class F (155°C)
Nuts-tightening torque	15,5 Nm
terminal designation	W2-U2-V2 U1-V1-W1