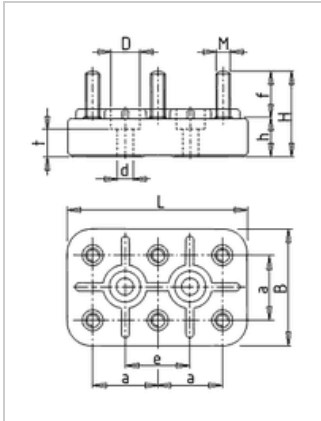




## Motor terminal board KL 7 K/4, 6-pole, M10

Manufacturer: Geiss  
Type: 710S  
Product no.: KL7K4  
Weight: 0.200



### ■ Details

motor terminal board with non-adjustable spacings the mounting holes

### ■ Scope of supply

Scope of supply: Pre-assembled with nuts and washers, optionally with or without 3 connection bridges.

### ■ Dimensions in mm (refer to dimension sheet)

L	B	M	H	H	F	A	E	DØ	DØ	T
114	70	<b>M10</b>	50.5	20.5	30	44	<b>44</b>	12	7.5	12

### ■ Specifications

<b>bolt-Ø</b>	M10
<b>basic body</b>	70 x 114 mm
<b>Hole spacing</b>	44 mm
<b>permitted continuous current</b>	160 A
<b>Nuts-tightening torque</b>	10 Nm
<b>terminal designation</b>	W2-U2-V2 U1-V1-W1