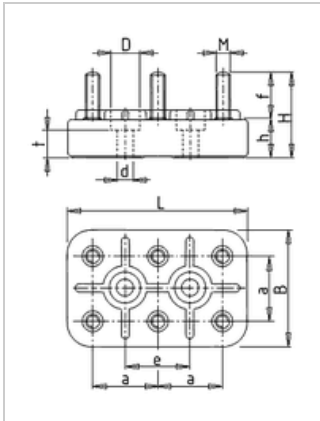




Motor terminal board KL 8 K, 6-pole, M5

Manufacturer: Geiss
Type: 8S
Product no.: KL8K
Weight: 0.090



■ Details

terminal board M5 with non-adjustable spacing 23 mm the mounting holes.

■ Scope of supply

scope of supply with nuts and washers, optionally without or with 3 connection bridges.

■ Dimensions in mm (refer to dimension sheet)

L	B	M	H	H	F	A	E	DØ	DØ	T
64	40	M5	27.5	12,5	15	23	23	11,5	7	8

■ Specifications

bolt-Ø	M5
basic body	40 x 64 mm
Hole spacing	23 mm
permitted continuous current	25 A
Nuts-tightening torque	2 Nm
terminal designation	W2-U2-V2 U1-V1-W1