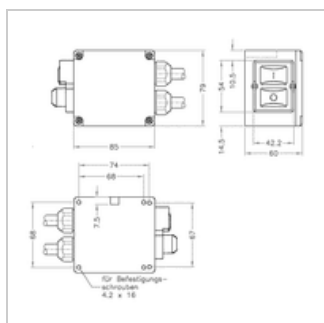
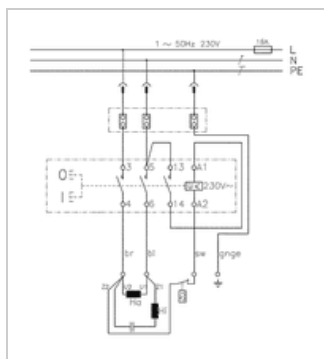




A.C.-Motor-switch up to 3 kW

Manufacturer:	Klinger & Born
Type:	K570/NKA12/KA12/Therm
Product no.:	MS570
Weight:	0.690



■ Details

AC-switch for circular saws, planing machines, shredders and other machines, which after power failure and power recovery are not allowed to turn back on.

Usable as a replacement for Kedu KOA8-11 (please note the wiring diagram)

■ Properties

- 2-pole switch (Contactor)
- Switching capacity up to 3 kW
- With undervoltage release
- Connection possibility for thermal contact

■ Specifications

Voltage Ue	230 V~
Current Ie	13.5 A
Contactor	KB-04, 230 V/3s~
Switching capacity	3.0 kW 230V~
Type of actuation	Mechanically on/off
Housing material	Polypropylene PP
Mounting position	Any
Protection class	IP54, splash water proof
Connection cable	On the mains 2 m H07RN-F 3 G1,5 Motor side 1 m H07RN-F 4G 1,5 With connection possibility of a thermal contact
Mounting dimensions	68 x 68 mm

■ Installation / connection (refer to wiring diagram)

The switch is screwed on the housing base. Grid dimension of the screws: 68 x 68 mm.
The cable outlet is on the opposite side of the keypad.

The black wire is the connection for the thermal contact. If the motor does not have a thermal contact, the black and brown wire have to be connected together on the terminal board.